

TradeWorks Field School



PRESERVATION TRADES WORKERS

WHO ARE THEY?

WHY ARE THEY IMPORTANT?

WHY MAINTAINING HISTORIC BUILDINGS IS IMPORTANT

TradeWorks Field School

WHAT: LEARN HOW HISTORIC BUILDINGS ARE RESTORED

WHEN: JUNE 12 - 16, 2023 9 AM - 3 PM

WHERE : KIZER HOUSE IN SOUTH BEND

WHO: HIGH SCHOOL TRADE STUDENTS ARE ELIGIBLE

COST: FREE TO ATTEND

+ REFRESHMENTS AND LUNCH INCLUDED

+ NETWORKING WITH EMPLOYERS

+ JOB OPPORTUNITIES FOR SUMMER

+ STARTER TOOL KIT, SHIRT AND CERTIFICATE OF COMPLETION



MASONRY

WHAT IS TRADITIONAL MASONRY

TYPES OF MASONRY

CARE FOR TRADITIONAL MASONRY

DO'S AND DONT'S OF MASONRY

CONSTRUCTION OF TRADITIONAL MASONRY

RESTORATION OF MASONRY



WINDOW RESTORATION

HISTORIC WINDOW TYPES AND OPERATION

WHY RESTORE HISTORIC WINDOWS

HOW TO CARE FOR HISTORIC WINDOWS

GLASS AND GLAZING PUTTY

RESTORATION OF HISTORIC WINDOWS

ENERGY EFFICIENCY UPGRADES FOR HISTORIC WINDOWS



FLOORING

TRADITIONAL WOOD FLOORING TYPES

WOOD FLOORING CARE

REPAIR AND REFINISHING

WHEN AND HOW TO REPLACE APPROPRIATELY



PAINT

TYPES OF PAINT PRODUCTS

WHEN TO USE EACH PAINT PRODUCT

HOW TO PREPARE SURFACES FOR PAINT

BEST PRACTICES FOR STRIPPING LEAD PAINT

PAINTING



EXTERIOR CARPENTRY

WOOD SPECIES AND DURABILITY

CONTEMPORARY WOOD COMPONENTS

EXTERIOR COMPONENTS AND PURPOSE

REPAIRING DAMAGED COMPONENTS

WHEN TO REPLACE DAMAGED WOOD COMPONENTS



PLASTER

VIRTUES OF PLASTER WALLS

CHALLENGES WITH PLASTER

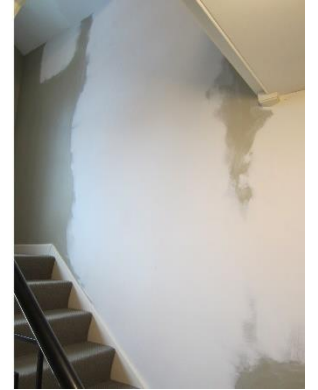
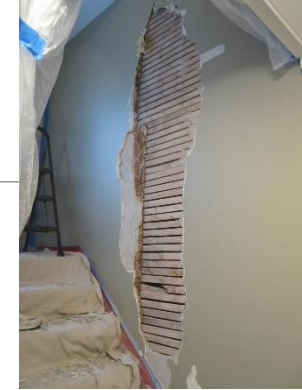
COMPOSITION AND APPLICATION

TYPES OF PLASTER AND USES

HOW TO REPAIR DAMAGED PLASTER

WHEN TO REPLACE

HOW TO CARE FOR PLASTER



TradeWorks Field School

MADE POSSIBLE THROUGH SUPPORT FROM:



**Harrison Goodall
Preservation Fellowship**



WHITE CAP

Joan Downs

Penn High School
Radio and TV class

Historic Preservation Commission
of South Bend & St. Joseph County